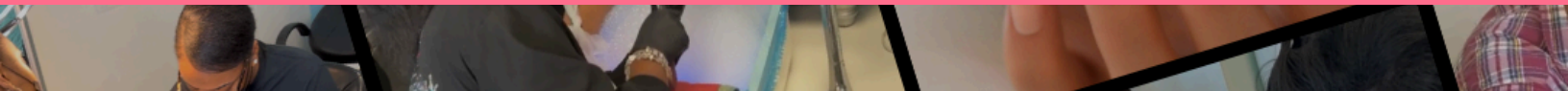


WHERE PROFESSIONALISM &  
SUCCESS MEET TO CREATE AN  
ICONIC BEAUTY EXPERIENCE

6553 BROADWAY AVE, CLEVELAND, OHIO 44105 216.331.2205



## ADMISSION REQUIREMENTS

NIBA does not discriminate on the basis of sex, race, age, color, ethnic origin, sexual orientation, gender identity, or religion.

Students may enroll in courses only through the Admissions Office. In order to be admitted into any course at NIBA the applicant must meet with an admissions representative and meet the following requirements:

- Be at least sixteen (16) years of age
- Completed the 10th grade, high school diploma or GED
- Passport or State I.D. Students under 18 must have parent signature.
- Provide valid social security card

## ACCEPTANCE AND ENROLLMENT

To secure enrollment at our academy, students must submit the required documentation, valid identification, and a completed application.

Registration Requirements:

- Registration Fee: A \$150 non-refundable fee is required to reserve your seat.
- Class Down Payment: \$550 is due on or before your first active class day.
- Course Materials: Your book must be obtained by your second class day.

All remaining tuition balances will be divided into convenient monthly payments to make your education journey more manageable.

# AGES 18-24 FREE TUITION INCENTIVE PROGRAM

All within the ages of 18-24 can go to Ohio Means Jobs to apply for tuition incentive program through Dynamic Workforce Training. Scan link, scroll down to youth orientation and setup an intake appointment.



# SCHOLARSHIP PROGRAM FROM NURTURING ANGELS AGES 10-60

Interested in becoming a nail tech? Enroll today for just \$150 Registration Fee. If qualify scholarships provided by Nurturing Angels with no cost tuition out of pocket.



## TUITION & FEES

Students are responsible for ensuring their tuition payments are made on time. Failure to stay current with payments may result in suspension or withdrawal from the program.

### Manicuring 200-Hour Program

- Registration Fee: \$150 (Includes application fee and 2 NIBA shirts)
- Book: \$165
- State Board Kit: \$150 (or NIBA Kit: \$350)
- Tuition: \$1,750

### Advanced Manicure (Additional 100 Hours)/ Refresher course

- Tuition: \$800

Please plan accordingly to ensure a smooth educational experience!

## CLASS SCHEDULES

We offer day and night class. A new class begins every 1st Monday of the month.

- \$150 registration fee to hold a seat in class.
- \$550 due on or before your first day of class. Monthly, weekly, bi-weekly payment plans available.

### Day Hours

- Monday and Tuesday 10am-3pm, Thursday 10am-5pm and Saturday 9:30am-4pm

### Night Hours

- Monday and Tuesday 5:30pm-9pm, Thursday 2:00pm-9pm and Saturday 9:30am-4pm.

